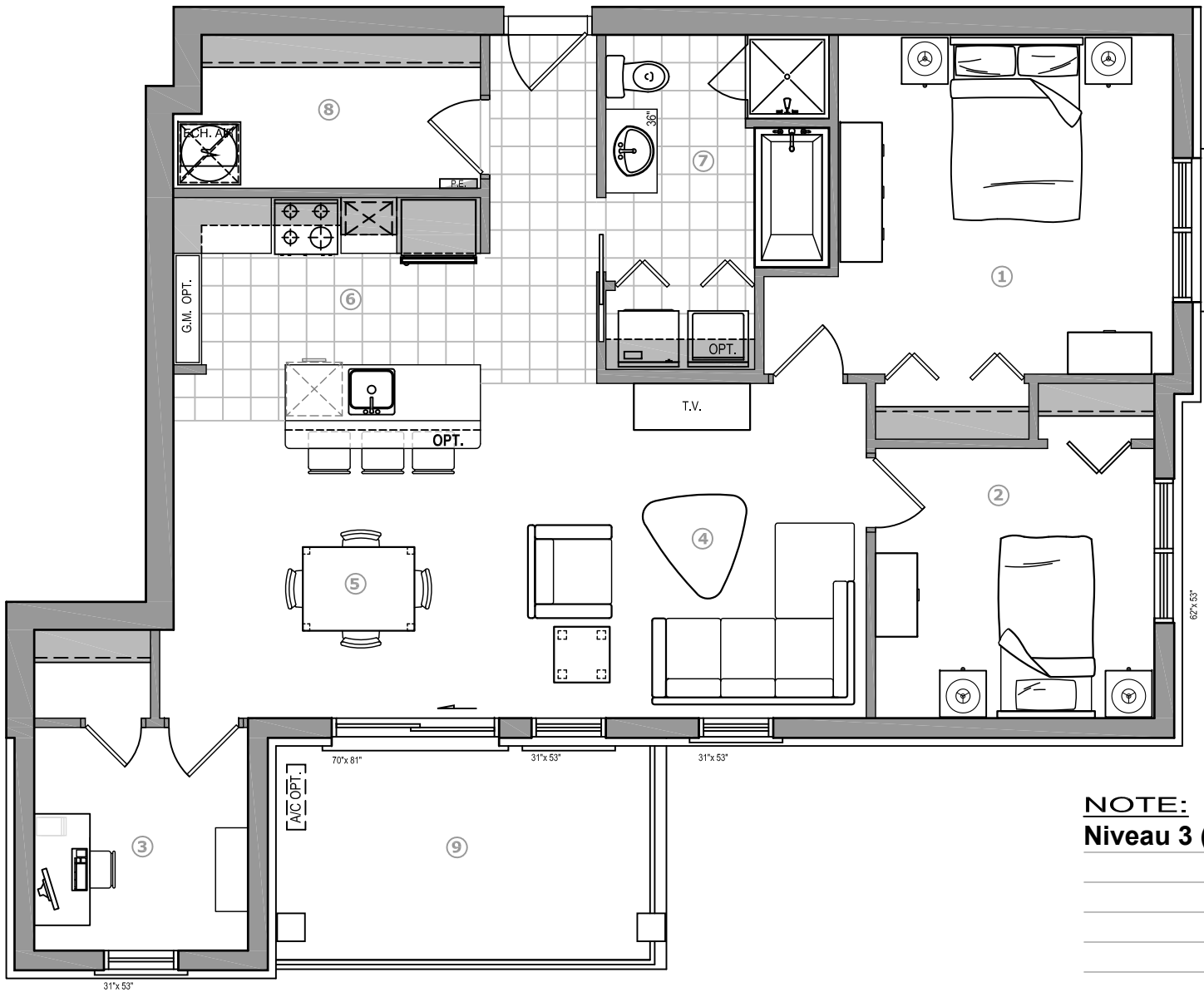
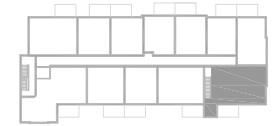


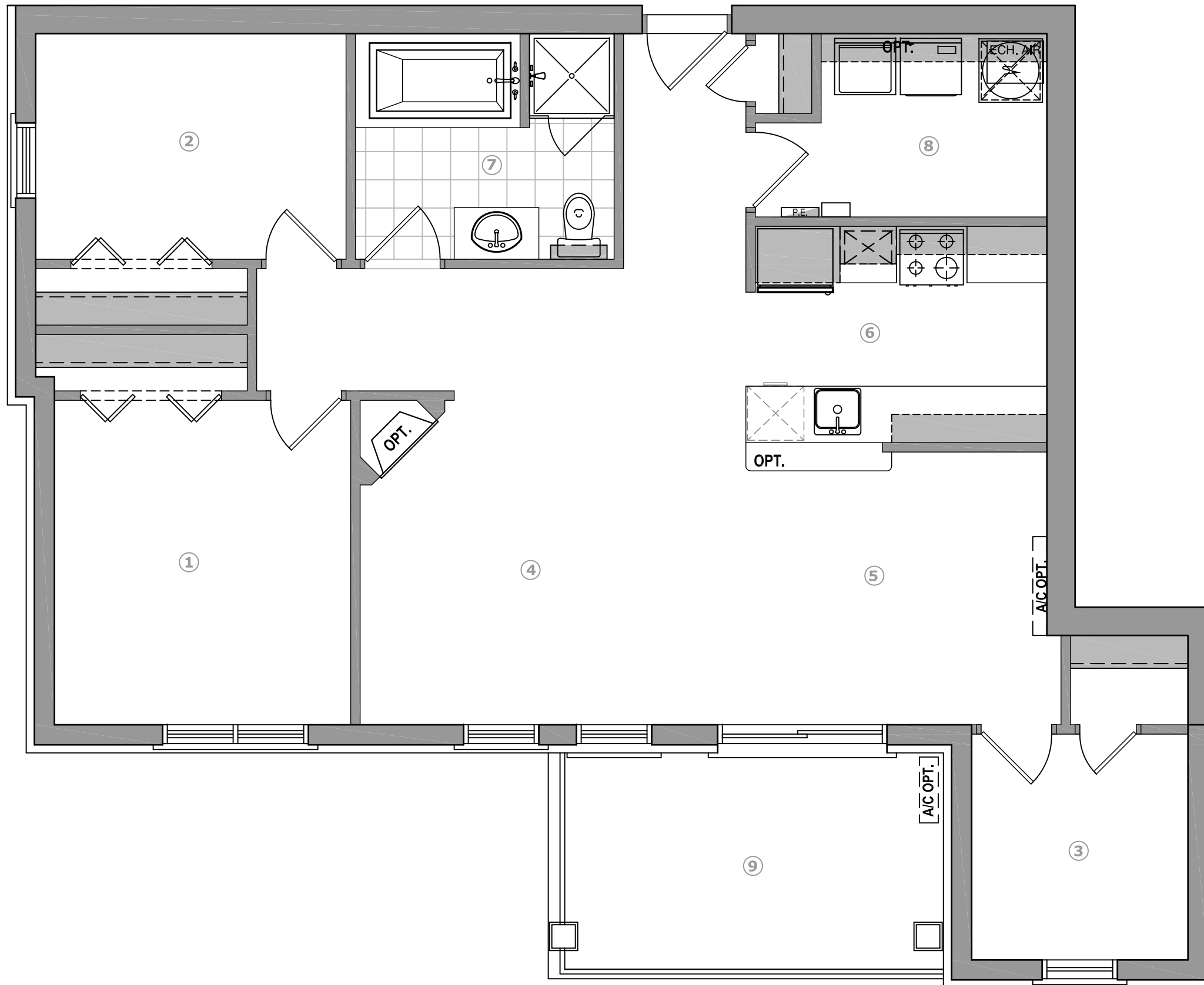
CONDO **P5A1F/2**
310 **1 063 pi²**

ECHELLE: N/A



- | | | |
|---|-------------------|------------------|
| ① | Chambre 1: | 12'-0" x 12'-0" |
| ② | Chambre 2: | 10'-0" x 9'-8" |
| ③ | Bureau: | 7'-8" x 8'-0" |
| ④ | Salon: | 13'-10" x 12'-0" |
| ⑤ | Salle à manger: | 11'-0" x 10'-8" |
| ⑥ | Cuisine: | 11'-0" x 8'-0" |
| ⑦ | Salle de bain: | 7'-10" x 12'-0" |
| ⑧ | Rangement: | 10'-0" x 5'-6" |
| ⑨ | Balcon/ terrasse: | 14'-0" x 8'-0" |

NOTE:
Niveau 3 (dernier niveau)

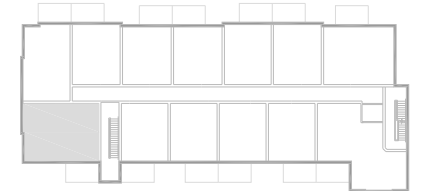


CONDO

312 **MONTAND 4 1/2 +**

1066 pi²

ECHELLE: 1/4" = 1'-0"



- ① Chambre1: 10'-6"x 11'-6"
- ② Chambre2: 11'-0"x 8'-0"
- ③ Bureau: 7'-8"x 8'-0"
- ④ Salon: 13'-8" x 16'-6"
- ⑤ Salle à manger: 10'-8" x 10'-0"
- ⑥ Cuisine: 10'-8" x 8'-0"
- ⑦ Salle de bain: 9'-2" x 8'-0"
- ⑧ Salle de lavage: 8'-0" x 6'-6"
- ⑨ Balcon: 14'-0" x 8'-0"

NOTE:

Voyer & Tremblay

Dessin d'artiste, des différences peuvent survenir lors de la construction. Les dimensions et superficies sont approximatives et sujettes à des modifications sans préavis.