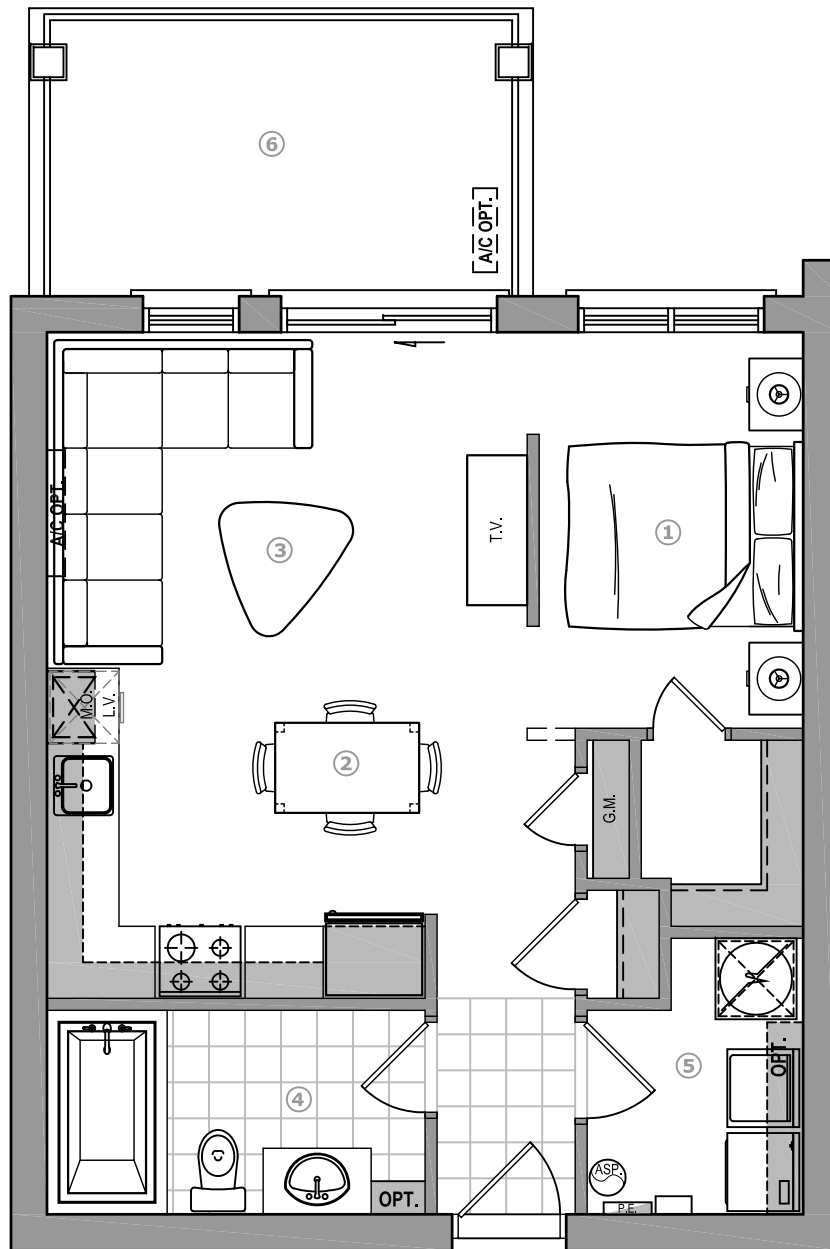
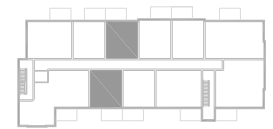


**CONDOS**

204- 304- 404  
205- 305- 405

573 pi<sup>2</sup>

ECHELLE: 3/16" = 1'-0"



- |   |                         |                |
|---|-------------------------|----------------|
| ① | Coin repos:             | 7'-4" x 11'-0" |
| ② | Salon:                  | 13'-4" x 9'-4" |
| ③ | Cuisine/Salle à manger: | 14'-8" x 9'-2" |
| ④ | Salle de bain:          | 9'-6" x 5'-8"  |
| ⑤ | Salle de lavage:        | 6'-0" x 7'-8"  |
| ⑥ | Balcon/ terrasse:       | 14'-0" x 8'-0" |

**NOTE:**

---

---

---

---

---

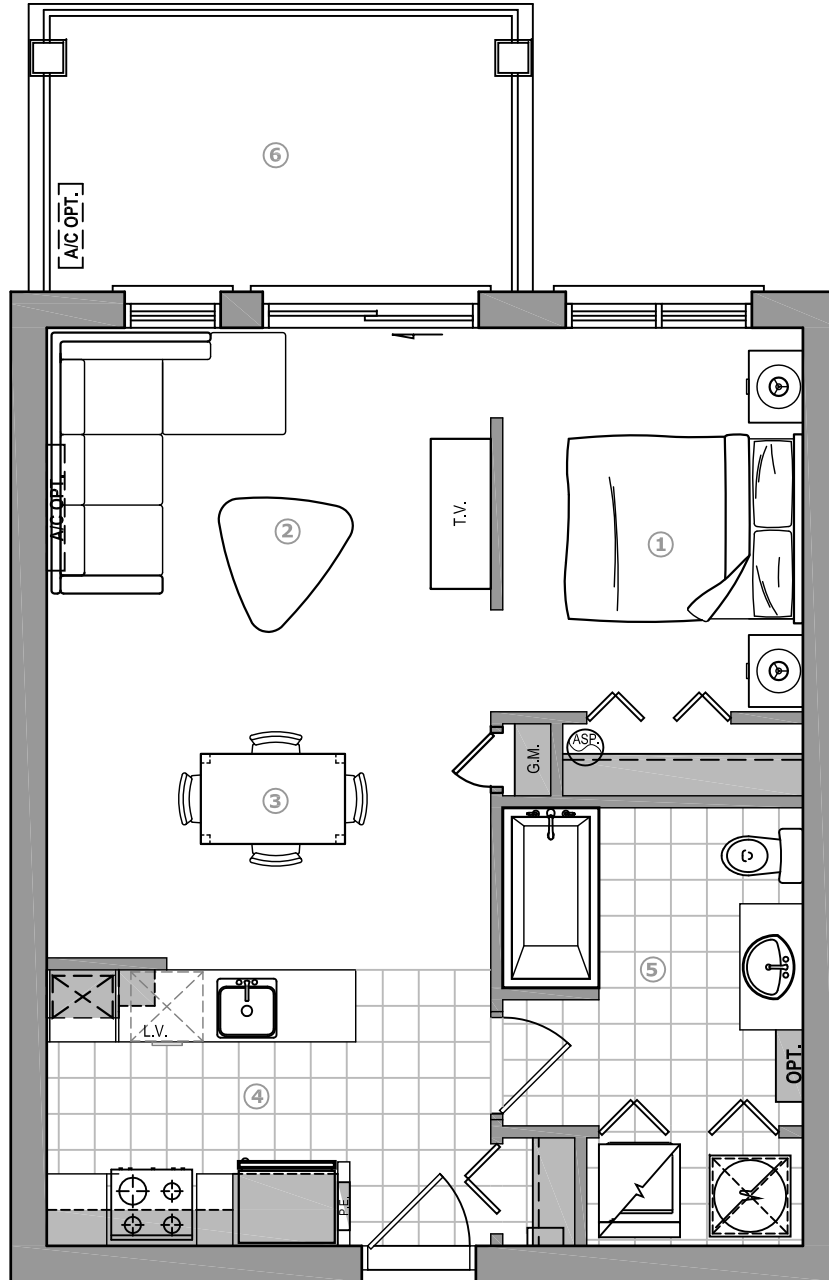
---

---

---

---

---

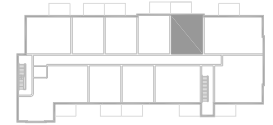


**CONDOS**

**BÉGAUD**

**209- 309- 409** **594 pi<sup>2</sup>**

ECHELLE: 3/16"= 1'-0"



- |   |                   |                 |
|---|-------------------|-----------------|
| ① | Coin repos:       | 8'-4" x 10'-8"  |
| ② | Salon:            | 12'-4" x 8'-10" |
| ③ | Salle à manger:   | 12'-4" x 9'-0"  |
| ④ | Cuisine:          | 8'-7" x 7'-8"   |
| ⑤ | Salle de bain:    | 8'-4" x 8'-10"  |
| ⑥ | Balcon/ terrasse: | 14'-0" x 8'-0"  |

**NOTE:**

---

---

---

---

---

---

---

---

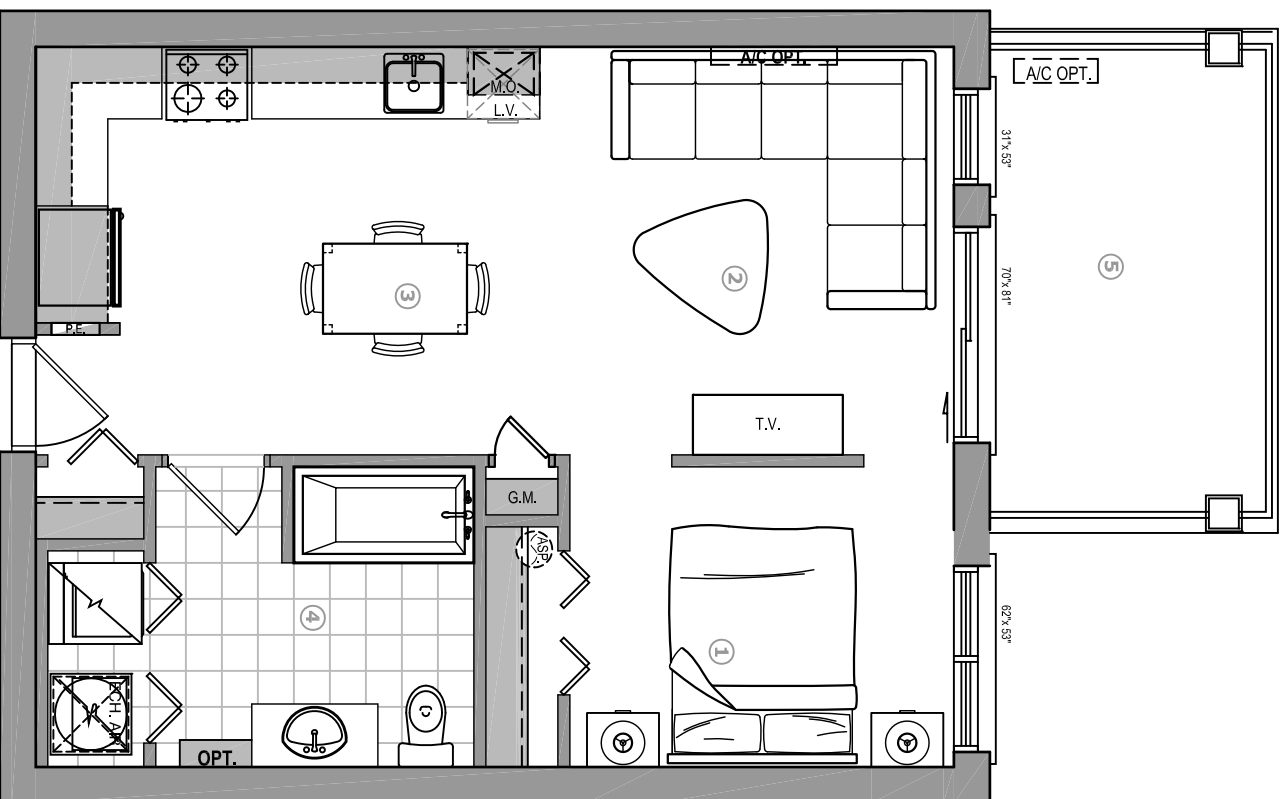
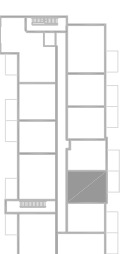
CONDOS

PL0FT

209-309

567 pi<sup>2</sup>

ECHELLE: 3/16" = 1'-0"



- |   |                         |                 |
|---|-------------------------|-----------------|
| ① | Coin repos:             | 8'-4" x 10'-4"  |
| ② | Salon:                  | 11'-4" x 11'-6" |
| ③ | Salle à manger/Cuisine: | 11'-6" x 14'-0" |
| ④ | Salle de bain:          | 8'-4" x 9'-2"   |
| ⑤ | Balcon/terrasse:        | 14'-0" x 8'-0"  |

**NOTE:**

---



---



---



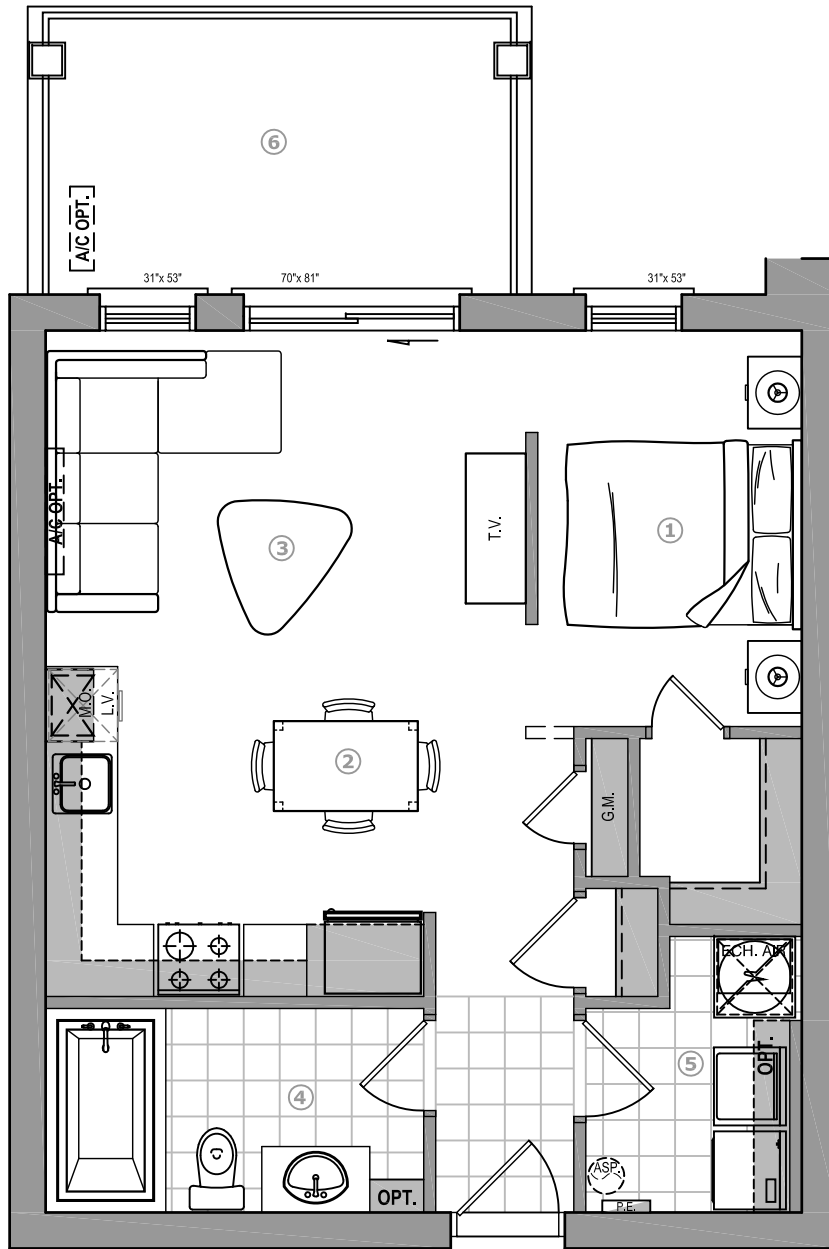
---



---



Dessin d'artiste, des différences peuvent survenir lors de la construction. Les dimensions et superficies sont approximatives et sujettes à des modifications sans préavis.



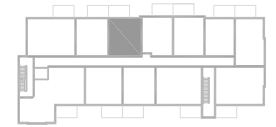
**CONDOS**

**PLAFT**

**205- 305**

**573 pi<sup>2</sup>**

ECHELLE: 3/16"= 1'-0"



- ① Coin repos: 7'-4" x 11'-0"
- ② Salon: 13'-4" x 9'-4"
- ③ Cuisine/Salle à manger: 14'-8" x 9'-2"
- ④ Salle de bain: 9'-6" x 5'-8"
- ⑤ Salle de lavage: 6'-0" x 7'-8"
- ⑥ Balcon/ terrasse: 14'-0" x 8'-0"

**NOTE:**

---

---

---

---

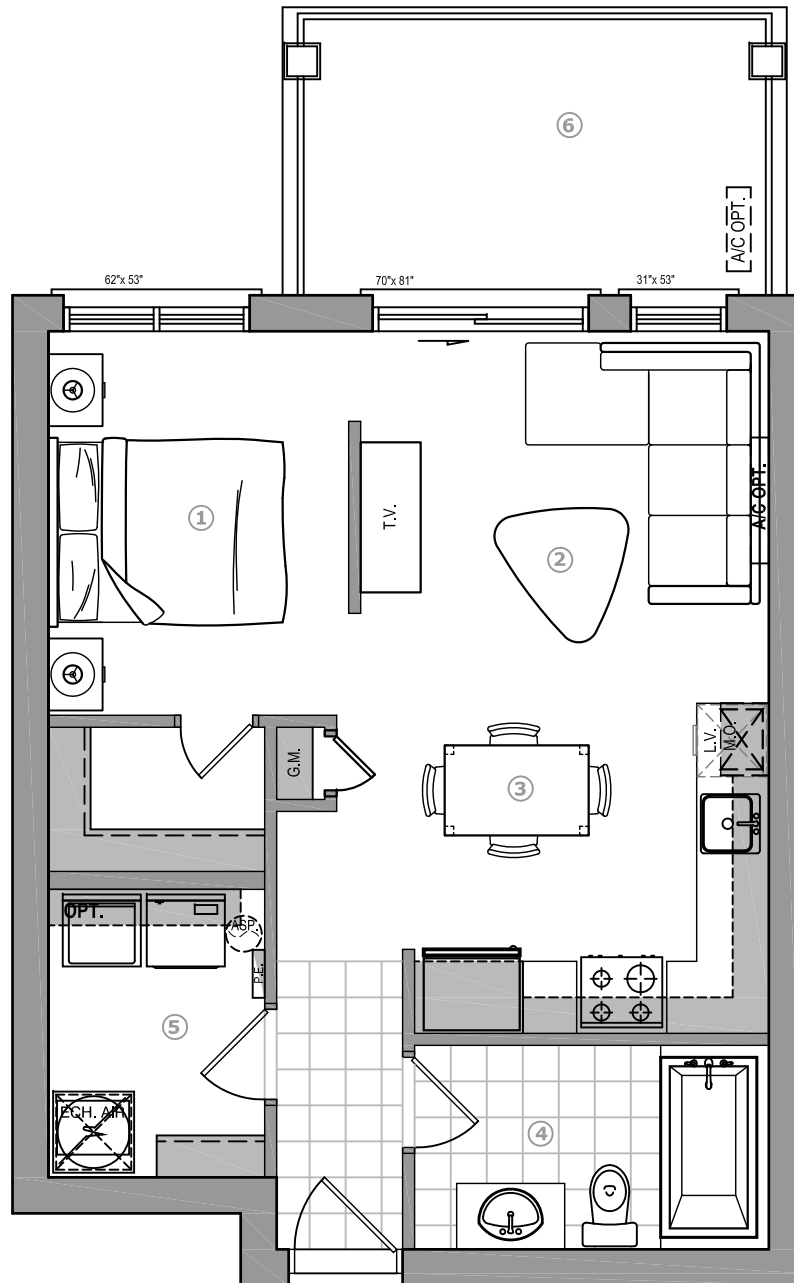
---

---

---

---

**Voyer & Tremblay**



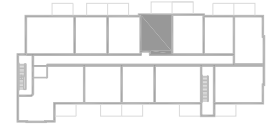
**CONDOS**

**PLAFT**

**207- 307**

**554 pi<sup>2</sup>**

ECHELLE: 3/16"= 1'-0"



- |   |                         |                 |
|---|-------------------------|-----------------|
| ① | Coin repos:             | 8'-4" x 10'-8"  |
| ② | Salon:                  | 11'-4" x 10'-4" |
| ③ | Salle à manger/Cuisine: | 12'-0" x 9'-2"  |
| ④ | Salle de bain:          | 9'-10" x 5'-8"  |
| ⑤ | Rangement:              | 6'-0" x 8'-0"   |
| ⑥ | Balcon / terrasse:      | 14'-0" x 8'-0"  |

**NOTE:**

---

---

---

---

---

---

---

---

---

---



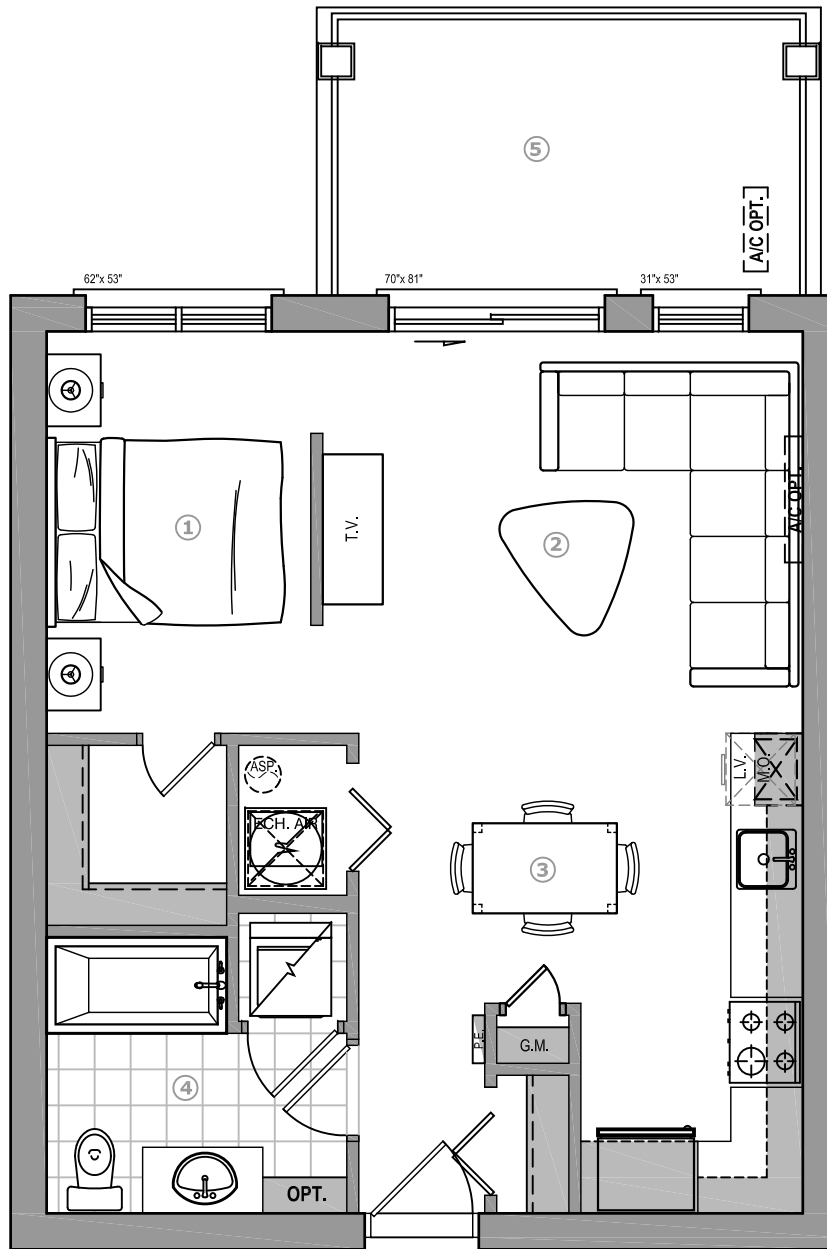
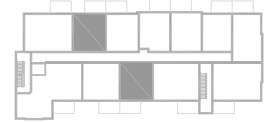
CONDOS

PLAFT

103- 203- 303  
206- 306

572 pi<sup>2</sup>

ECHELLE: 3/16" = 1'-0"



- ① Coin repos: 7'-4" x 11'-2"
- ② Salon: 13'-3" x 11'-2"
- ③ Cuisine-Salle à manger: 12'-4" x 7'-6"/ 13'-4"
- ④ Salle de bain: 8'-4" x 7'-8"
- ⑤ Balcon/ terrasse: 14'-0" x 8'-0"

NOTE:

---



---



---



---



---



---



# LE QUARTIER MONTMARTRE

LE CHARME EUROPÉEN À SAINT-JÉRÔME

Place des Artistes

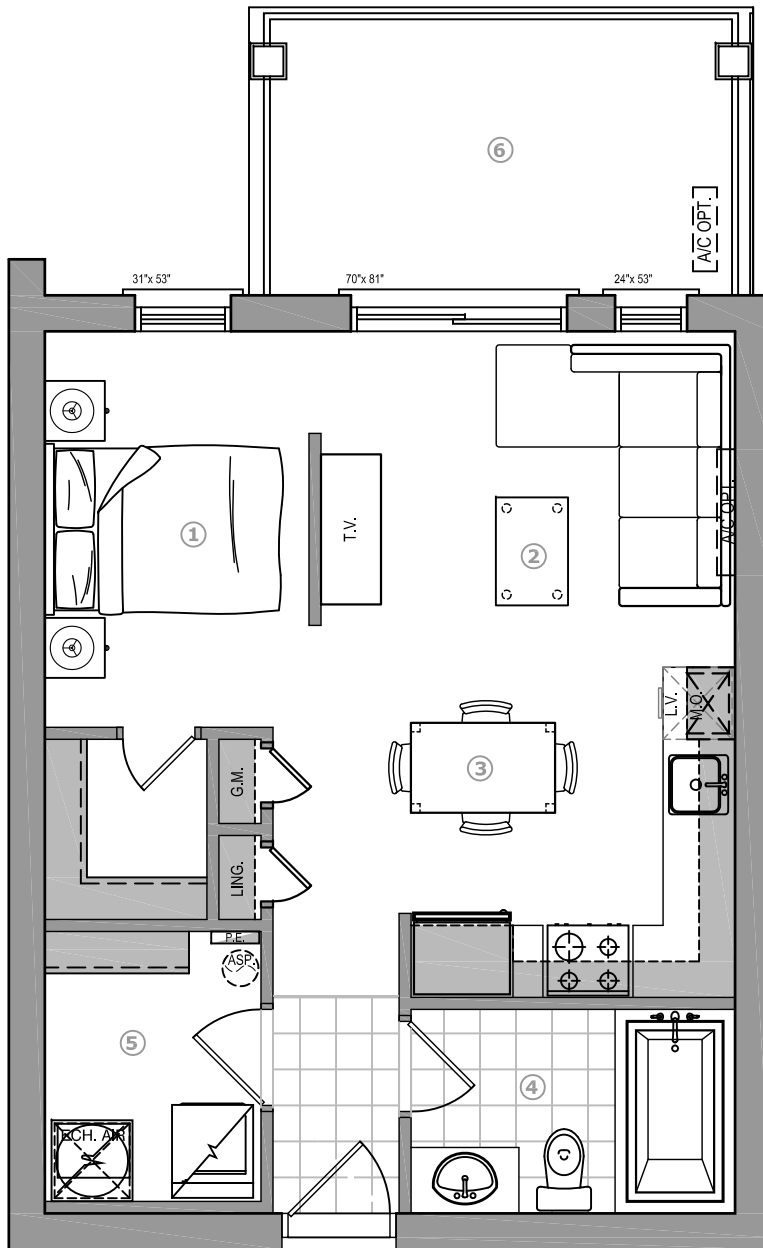
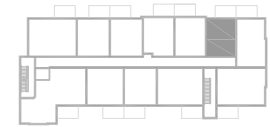
CONDOS

PLAFT

211- 311

525 pi<sup>2</sup>

ECHELLE: 3/16" = 1'-0"



- ① Coin repos: 7'-4" x 11'-0"
- ② Salon: 11'-6" x 9'-4"
- ③ Salle à manger/ Cuisine: 12'-10" x 9'-2"
- ④ Salle de bain: 9'-0" x 5'-8"
- ⑤ Rangement: 6'-0" x 7'-10"
- ⑥ Balcon/ terrasse: 14'-0" x 8'-0"

**NOTE:**

---



---



---



---

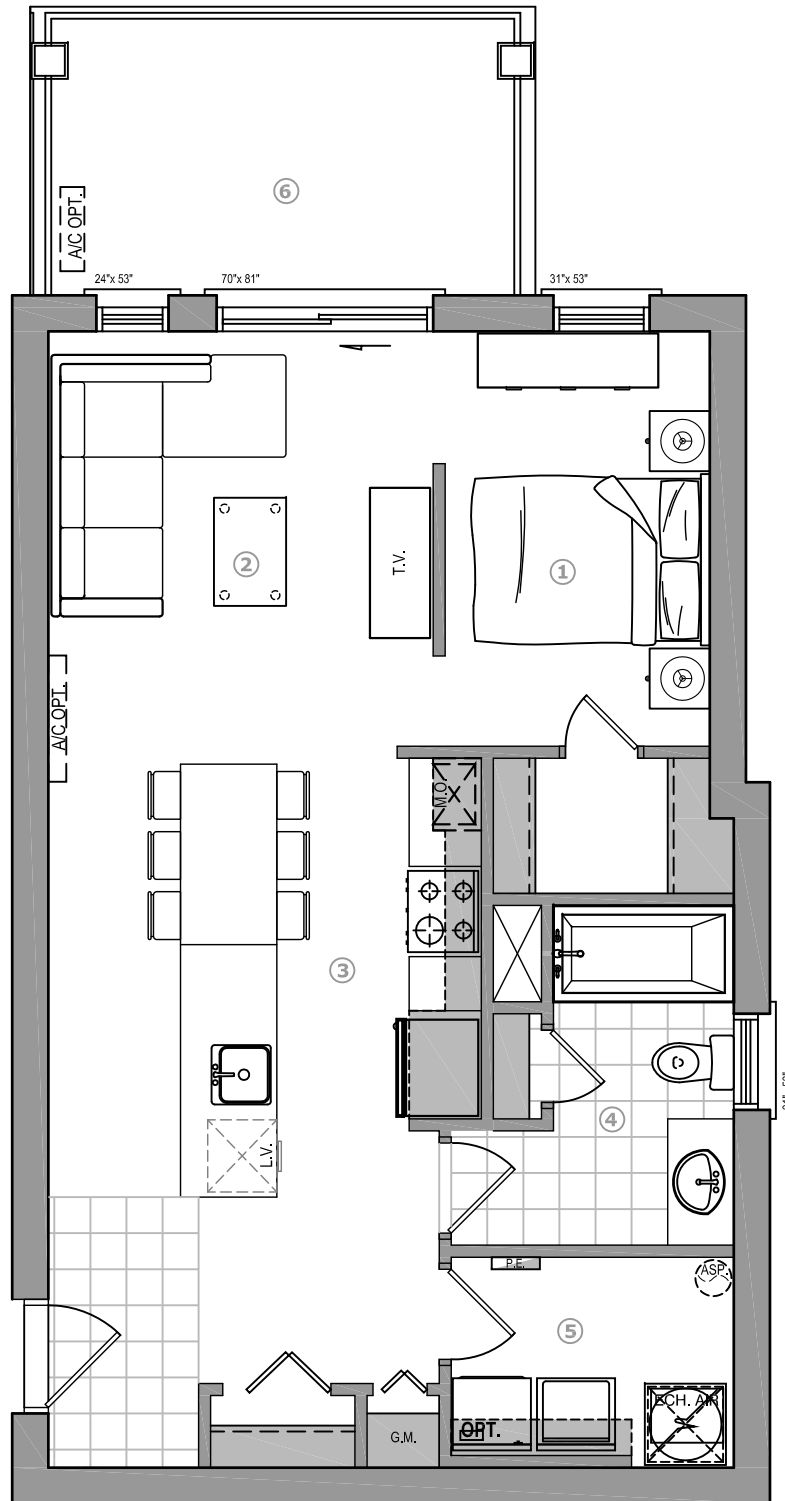


---



---

Voyer & Tremblay



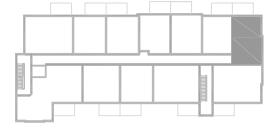
**CONDOS**

**PLAFT**

**112- 212- 312**

**668 pi<sup>2</sup>**

ECHELLE: N/A



- ① Coin repos: 7'-4" x 11'-6"
- ② Salon: 10'-8" x 12'-0"
- ③ Salle à manger/cuisine: 12'-0" x 17'-2"
- ④ Salle de bain: 6'-6" x 9'-5"
- ⑤ S. Lavage/ Rang.: 7'-10" x 5'-10"
- ⑥ Balcon/ terrasse: 14'-0" x 8'-0"

**NOTE:**

---



---



---



---



---

