

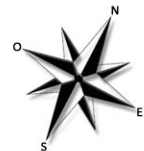
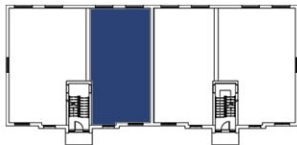


QUARTIER ST-LOUIS
PROJET D'HABITATION

BÂTIMENT 1

UNITÉS 002-102-202-302

4 1/2



voyertremblay.com

1702, Avenue de Clignancourt, St-Jérôme / j.levasseur@voyertremblay.com

Voyer & Tremblay

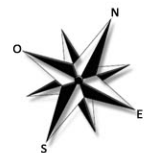
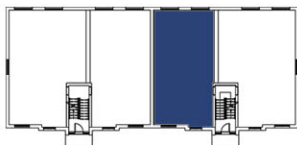
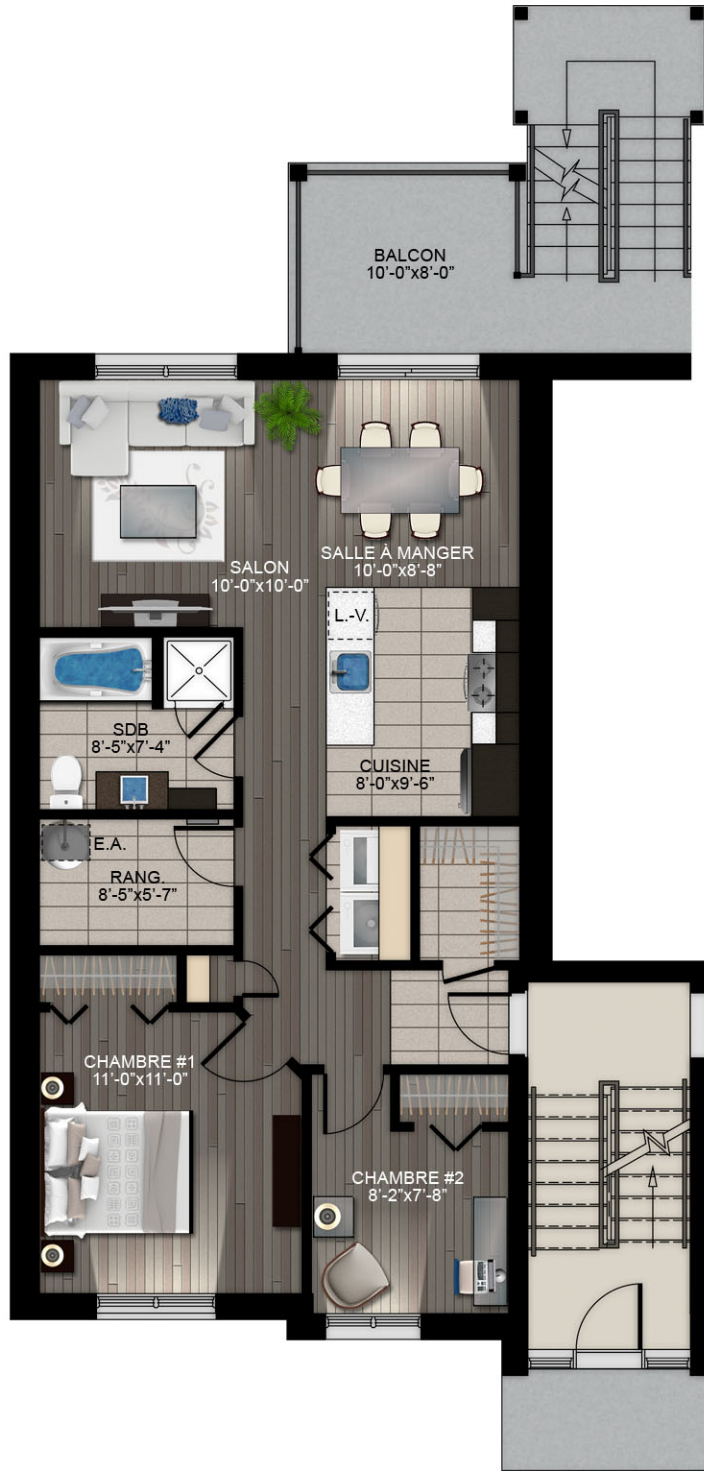


QUARTIER ST-LOUIS
PROJET D'HABITATION

BÂTIMENT 1

UNITÉS 003-103-203-303

4 1/2



voyertremblay.com

1702, Avenue de Clignancourt, St-Jérôme / j.levasseur@voyertremblay.com

Voyer & Tremblay